

# CP 155 (-LS)

PRODUCT PASS

Date: **08-06-2023**

Language: **English**

**VITRUM**  
WINDOWS & DOORS



**Together for better**  
[www.reynaers.com](http://www.reynaers.com)

## 1 GENERAL EXPLANATION

The following paragraphs indicate the performances which can be declared on the Declaration of Performance (DoP) in accordance with Regulation (EU) no. 305/2011 of the European Parliament and of the Council of 9 March 2011.

The listed characteristics are the essential characteristics for external pedestrian doorsets according to hEN 14351-1:2006+A2:2016 Windows and doors - Product standard, performance characteristics - Part 1: Windows and external pedestrian doorsets.

All essential characteristics should be mentioned on the DoP. Where no performance is required, NPD (No Performance Declared) can be used.

The mentioned performances are performances which can be achieved for the given dimensions when the product is fabricated following the Reynaers instruction manual (catalogue). The performances as mentioned will meet the requirements of the majority of projects.

Higher performances for smaller dimensions or lower performances for larger dimensions might be possible. In this case contact your Reynaers office. For AWW performances, the maximum dimensions indicated in the system catalogue must be respected.

It is obviously allowed to declare lower performances than those mentioned in the product pass. E.g. when resistance to wind load of 1600 Pa was tested, also 1200 Pa can be declared.

In the second part of the table the non-essential characteristics are indicated. These are the characteristics which give information about the performance of a product, but which are not legally required in any European country and thus not mandatory to declare.

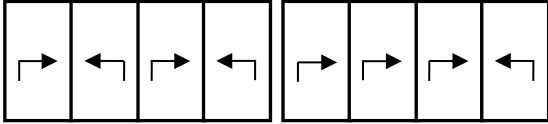
## 2 NOTIFIED BODIES

ID	Name	Address	Country
0074	CENTRE D'EXPERTISE DU BÂTIMENT ET DES TRAVAUX PUBLICS	Domaine De Saint-Paul – 102, Route de Limours 78471 Saint-Remy-Les-Chevreuse Cedex	France
0432	MATERIALPRÜFUNGSAMT NORDRHEIN-WESTFALEN	Auf den Thränen 2 59597 Erwitte	Germany
0679	CENTRE SCIENTIFIQUE ET TECHNIQUE DU BÂTIMENT	84, Avenue Jean Jaurès Champs-sur-Marne F-77447 Marne-la-Vallée Cedex 2	France
0744	SOCOTEC	Les Quadrants – 3,Avenue du Centre – Guyancourt 78182 St-Quentin en Yvelines	France
0749	BELGIAN CONSTRUCTION CERTIFICATION ASSOCIATION	Aarlenstraat 53 1040 Brussel	Belgium
0757	IFT ROSENHEIM	Theodor-Gietl-Strasse 7-9 83026 Rosenheim	Germany
0845	DANISH INSTITUTE OF FIRE AND SECURITY TECHNOLOGY	Jernholmen, 12 2650 Hvidovre	Denmark
0960	SKG-IKOB	Poppenbouwing 56 4191 NZ Geldermalsen	Netherlands
1136	BELGIAN BUILDING RESEARCH INSITUTE	Lombardstraat 42 1000 Brussel	Belgium
1234	EFFECTIS NEDERLAND	Brandpuntlaan Zuid 16, Postbus 554 2665 ZN Bleiswijk	Netherlands
1288	WINTech ENGINEERING LIMITED	Halesfield 2 Telford,Shropshire TF7 4QH	United Kingdom
1309	PRÜFINSTITUT SCHLÖSSER UND BESCHLÄGE, VELBERT	Wallstrasse 41 42551 Velbert	Germany
1488	INSTYTUT TECHNIKI BUDOWLANEJ	ul. Filtrowa 1 00-611 Warszawa	Poland
1671	PEUTZ	Lindenlaan 41, Molenhoek PO Box 66 6585 ZH MOOK	Netherlands
1749	TNO DEFENCE, SECURITY AND SAFETY	Lange Kleiweg 137, Postbus 45 2280 AA Rijswijk	Netherlands
1769	UNIVERSITY OF GENT	Sint-Pietersnieuwstraat 41 9000 Gent	Belgium
2211	INSTITUTO DE INVESTIGAÇÃO E DESENVOLVIMENTO TECNOLÓGICO PARA A CONSTRUÇÃO, ENERGIA, AMBIENTE E SUSTENTABILIDADE	Rua Pedro Hispano Pólo II da Universidade de Coimbra 3030-289 Coimbra	Portugal

### 3 VARIANTS

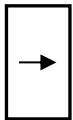
Different variants have been grouped based on similar design and following the guidelines of the harmonised standard

Slide		Lift Slide	
5.1	2-rail	5.4	2-rail
	5.5	2-rail	2-rail
		5.6	2-rail - Corner
5.2	Monorail	5.7	Monorail
		5.8	Minergie
5.3	3-rail	5.9	3-rail
		5.10	3-rail - Zero threshold

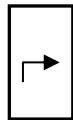
Slide		Lift Slide	
		5.11	4-rail 

#### 4 EXPLANATIONS AND SYMBOLS

H: Element Height  
 B: Element Width  
 Fh: Vent Height  
 Fb: Vent Width  
 npd: No Performance Declared  
 CWFT: Classification Without Further Testing



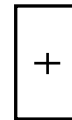
Sliding vent



Lift sliding vent



Fixed vent



Fixed pane monorail

(1) Report for CP 96 and/or CP 96-LS can be used because of identical or equivalent accessories

(2) Standard glazing beads: P < 2000 Pa, WxH < 1400x2400; P < 1200 Pa, WxH < 3200x3200.

Tubular glazing beads: P < 2000 Pa, WxH < 3200x3200 (SKG 10.185a).

(3) BT lock

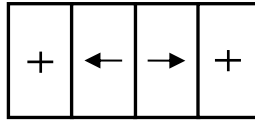
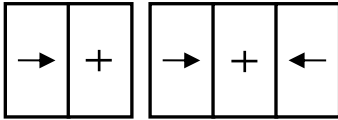
## 5 PERFORMANCE

### 5.1 2-rail Slide



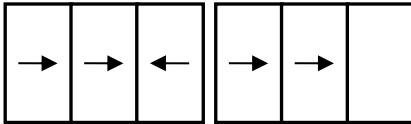
Characteristic		Performance	Notified body - Report		Limits (mm)		
<b>Essential characteristics</b>							
EN 14351-1	4.2	Resistance to wind load	<b>C3</b> (1200 Pa)	[0960] – 08.1061	FbxFh < 1563x2406 <sup>(2)</sup>		
	4.5	Watertightness	<b>8A</b> (450 Pa)	[0960] – 08.1061	FbxFh < 1563x2406		
	4.6	Dangerous substances	In the materials delivered by Reynaers, no dangerous substances as indicated in hEN 14351-1 are used.				
	4.7	Impact resistance	<b>5</b>	[0960] – SKG/HRU/cbo10.0099-4	FbxFh > 821x1729		
	4.8	Load-bearing capacity of safety devices	npd				
	4.9	Height & width	See 6				
	4.11	Acoustic performance	Glass:	Sliding door:	[0757] – 162 34130/3 R1	WxH = 2670x2510	
			<b>34 (-1;-4)</b>	<b>35 (-2;-4)</b>			
			<b>41 (-2;-4)</b>	<b>37 (-1;-2)</b>			
			<b>50 (-2;-8)</b>	<b>40 (0;-2)</b>			
4.12	Thermal transmittance	Ud to be calculated in function of the project. Pre-calculated U-values for dimensions 2000x2180mm can be found in the Uf-value tables. Uf-values are calculated under certification of BCCA: certificate BPCB-420-72-10077/2.					
4.13	Radiation properties	These properties must be evaluated by the CE-label of the glass					
4.14	Air permeability	<b>4</b>	[0960] – 08.1061	FbxFh < 1563x2406			
<b>Non-essential characteristics</b>							
EN 14351-1	4.4.1	Reaction to fire	Anodized: <b>A1</b> Painted: <b>A2</b> Gaskets: <b>E</b>	EC decision 96/603/EC certificate EFR-21-001664A [0432] – 230006500-6			
	4.16	Operating forces	<b>1</b>	[0960] – 20.00192 [0960] – 20.00349	FbxFh < 2150x2896 300 kg		
	4.17	Mechanical strength	npd				
	4.18	Ventilation	npd				
	4.19	Bullet resistance (BP version)	npd				
	4.20	Explosion resistance	npd				
	4.21	Resistance to repeated opening and closing	<b>3</b> (20 000)	0960] – 20.00192 [0960] – 20.00349	FbxFh < 2150x2896 300 kg		
	4.22	Behaviour between different climates	npd				
	4.23	Burglar resistance (AP version)	<b>RC 2</b>	[1309] – 45-2/20.121 [0960] – 20.00188 <sup>(3)</sup>	See report		

## 5.2 Monorail Slide

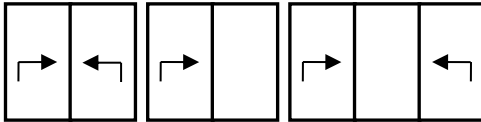


Characteristic		Performance	Notified body - Report		Limits (mm)	
<b>Essential characteristics</b>						
EN 14351-1	4.2	Resistance to wind load	<b>C4</b> (1600 Pa)	[0960] – 08.1059 <sup>(1)</sup>	FbxFh < 1472x2422 <sup>(2)</sup>	
	4.5	Watertightness	<b>7A</b> (300 Pa)	[0960] – 08.1059	FbxFh < 1472x2422	
	4.6	Dangerous substances	In the materials delivered by Reynaers, no dangerous substances as indicated in hEN 14351-1 are used.			
	4.7	Impact resistance	<b>5</b>	[0960] – SKG/HRU/cbo10.0099-4	FbxFh > 821x1729	
	4.8	Load-bearing capacity of safety devices	npd			
	4.9	Height & width	See 6			
	4.11	Acoustic performance	Glass:	Sliding door:	[0757] – 162 34130/3 R1	WxH = 2670x2510
			<b>34 (-1;-4)</b> <b>41 (-2;-4)</b> <b>50 (-2;-8)</b>	<b>35 (-2;-4)</b> <b>37 (-1;-2)</b> <b>40 (0;-2)</b>		
	4.12	Thermal transmittance	Ud to be calculated in function of the project. Pre-calculated U-values for dimensions 2000x2180mm can be found in the Uf-value tables. Uf-values are calculated under certification of BCCA: certificate BPCB-420-72-10077/2.			
	4.13	Radiation properties	These properties must be evaluated by the CE-label of the glass			
4.14	Air permeability	<b>4</b>	[0960] – 08.1059	FbxFh < 1472x2422		
<b>Non-essential characteristics</b>						
EN 14351-1	4.4.1	Reaction to fire	Anodized: <b>A1</b> Painted: <b>A2</b> Gaskets: <b>E</b>	EC decision 96/603/EC certificate EFR-21-001664A [0432] – 230006500-6		
	4.16	Operating forces	<b>1</b>	[0960] – 20.00192 [0960] – 20.00349	FbxFh < 2150x2896 300 kg	
	4.17	Mechanical strength	npd			
	4.18	Ventilation	npd			
	4.19	Bullet resistance (BP version)	npd			
	4.20	Explosion resistance	npd			
	4.21	Resistance to repeated opening and closing	<b>3</b> (20 000)	[0960] – 20.00192 [0960] – 20.00349	FbxFh < 2150x2896 300 kg	
	4.22	Behaviour between different climates	npd			
	4.23	Burglar resistance (AP version)	<b>RC 2</b>	[1309] – 45-2/20.121 [0960] – 20.00188 <sup>(3)</sup>	See report	

<sup>(1)</sup> inside glazing of fixed vent; sliding vent positioned on the outside

**5.3 3-rail Slide**


Characteristic		Performance	Notified body - Report	Limits (mm)		
<b>Essential characteristics</b>						
<b>EN 14351-1</b>	4.2	Resistance to wind load	<b>C3</b> (1200 Pa)	[0960] – 08.1061	FbxFh < 1404x2356 <sup>(2)</sup>	
	4.5	Watertightness	<b>8A</b> (450 Pa)	[0960] – 08.1061	FbxFh < 1404x2356	
	4.6	Dangerous substances	In the materials delivered by Reynaers, no dangerous substances as indicated in hEN 14351-1 are used.			
	4.7	Impact resistance	<b>5</b>	[0960] – SKG/HRU/cbo10.0099-4	FbxFh > 821x1729	
	4.8	Load-bearing capacity of safety devices	npd			
	4.9	Height & width	See 6			
	4.11	Acoustic performance	Glass: <b>34 (-1;-4)</b> <b>41 (-2;-4)</b> <b>50 (-2;-8)</b>	Sliding door: <b>35 (-2;-4)</b> <b>37 (-1;-2)</b> <b>40 (0;-2)</b>	[0757] – 162 34130/3 R1	WxH = 2670x2510
	4.12	Thermal transmittance	Ud to be calculated in function of the project. Pre-calculated U-values for dimensions 2000x2180mm can be found in the Uf-value tables. Uf-values are calculated under certification of BCCA: certificate BPCB-420-72-10077/2.			
	4.13	Radiation properties	These properties must be evaluated by the CE-label of the glass			
	4.14	Air permeability	<b>4</b>	[0960] – 08.1061	FbxFh < 1404x2356	
<b>Non-essential characteristics</b>						
<b>EN 14351-1</b>	4.4.1	Reaction to fire	Anodized: <b>A1</b> Painted: <b>A2</b> Gaskets: <b>E</b>	EC decision 96/603/EC certificate EFR-21-001664A [0432] – 230006500-6		
	4.16	Operating forces	<b>1</b>	[0960] – 20.00192 [0960] – 20.00349	FbxFh < 2150x2896 300 kg	
	4.17	Mechanical strength	npd			
	4.18	Ventilation	npd			
	4.19	Bullet resistance (BP version)	npd			
	4.20	Explosion resistance	npd			
	4.21	Resistance to repeated opening and closing	<b>3</b> (20 000)	[0960] – 20.00192 [0960] – 20.00349	FbxFh < 2150x2896 300 kg	
	4.22	Behaviour between different climates	npd			
	4.23	Burglar resistance (AP version)	<b>RC 2</b>	[1309] – 45-2/20.121 [0960] – 20.00188 <sup>(3)</sup>	See report	

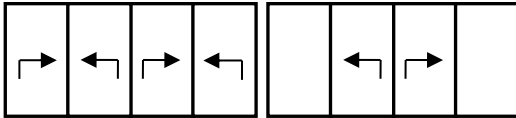
**5.4 2-rail Lift Slide**


Characteristic		Performance	Notified body - Report		Limits (mm)	
<b>Essential characteristics</b>						
EN 14351-1	4.2	Resistance to wind load	<b>C3</b> (1200 Pa) <b>C3</b> (1200 Pa) <b>C3</b> (1200 Pa) <b>C2</b> (800 Pa)	[0960] – 18.00477 [0960] – 20.00713 (**) [0960] – 18.00540 Rev A (*) [1488] – LK02-00948/14/R73NK	FbxFh < 1500x2380 <sup>(2)</sup> FbxFh < 1487x2381 <sup>(2)</sup> FbxFh < 1468x2380 <sup>(2)</sup> FbxFh < 2497x3386 <sup>(2)</sup>	
	4.5	Watertightness	<b>E900</b> (900 Pa) <b>E750</b> (750 Pa) <b>9A</b> (600 Pa) <b>8A</b> (450 Pa)	[0960] – 18.00477 [0960] – 20.00713 (**) [0960] – 18.00540 Rev A (*) [1488] – LK02-00948/14/R73NK	FbxFh < 1500x2380 FbxFh < 1487x2381 FbxFh < 1468x2380 FbxFh < 2497x3386	
	4.6	Dangerous substances	In the materials delivered by Reynaers, no dangerous substances as indicated in hEN 14351-1 are used.			
	4.7	Impact resistance	<b>5</b>	[0960] – SKG/HRU/cbo10.0099-5	FbxFh > 821x1729	
	4.8	Load-bearing capacity of safety devices	npd			
	4.9	Height & width	See 6			
	4.11	Acoustic performance	Glass: <b>34 (-1;-4)</b> <b>41 (-2;-4)</b> <b>50 (-2;-8)</b>	Sliding door: <b>35 (-2;-5)</b> <b>38 (-1;-3)</b> <b>42 (-1;-3)</b>	[0757] – 162 34130/4 R1	WxH = 2670x2510
	4.12	Thermal transmittance	Ud to be calculated in function of the project. Pre-calculated U-values for dimensions 2000x2180mm can be found in the Uf-value tables. Uf-values are calculated under certification of BCCA: certificate BPCB-420-72-10077/2.			
	4.13	Radiation properties	These properties must be evaluated by the CE-label of the glass			
	4.14	Air permeability	<b>4</b>	[0960] – 18.00477 [0960] – 20.00713 (**) [0960] – 18.00540 Rev A (*) [1488] – LK02-00948/14/R73NK	FbxFh < 1500x2380 FbxFh < 1487x2381 FbxFh < 1468x2380 FbxFh < 2497x3386	
<b>Non-essential characteristics</b>						
EN 14351-1	4.4.1	Reaction to fire	Anodized: <b>A1</b> Painted: <b>A2</b> Gaskets: <b>E</b>	EC decision 96/603/EC certificate EFR-21-001664A [0432] – 230006500-6		
	4.16	Operating forces	<b>2</b>	[1769] – 363/2513	FbxFh < 1998x2886 219 kg	
	4.17	Mechanical strength	npd			
	4.18	Ventilation	npd			
	4.19	Bullet resistance (BP version)	npd			
	4.20	Explosion resistance	npd			
	4.21	Resistance to repeated opening and closing	<b>4</b> (50 000) <b>3</b> (20 000)	[0960] – 09.1125 <sup>(1)</sup> [0960] – 15.00681	FbxFh < 1428x2219 150 kg FbxFh < 2700x3500 296 kg	
	4.22	Behaviour between different climates	npd			
	4.23	Burglar resistance (AP version)	<b>RC 2</b>	[1309] – 45-2/20.121	See report	

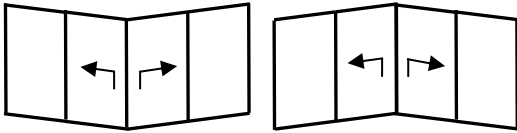
(\*) Slim Chicane

(\*\*) Motorized



**5.5 2-rail Lift Slide**


Characteristic		Performance	Notified body - Report	Limits (mm)		
<b>Essential characteristics</b>						
EN 14351-1	4.2	Resistance to wind load	<b>B3</b> (1200 Pa)	[0960] - 16.00865 Rev A	FbxFh < 1649x2986 <sup>(2)</sup>	
	4.5	Watertightness	<b>8A</b> (450 Pa)	[0960] - 16.00865 Rev A	FbxFh < 1649x2986	
	4.6	Dangerous substances	In the materials delivered by Reynaers, no dangerous substances as indicated in hEN 14351-1 are used.			
	4.7	Impact resistance	<b>5</b>	[0960] – SKG/HRU/cbo10.0099-5	FbxFh > 821x1729	
	4.8	Load-bearing capacity of safety devices	npd			
	4.9	Height & width	See 6			
	4.11	Acoustic performance	Glass: <b>34 (-1;-4)</b> <b>41 (-2;-4)</b> <b>50 (-2;-8)</b>	Sliding door: <b>35 (-2;-5)</b> <b>38 (-1;-3)</b> <b>42 (-1;-3)</b>	[0757] – 162 34130/4 R1	WxH = 2670x2510
	4.12	Thermal transmittance	Ud to be calculated in function of the project. Pre-calculated U-values for dimensions 2000x2180mm can be found in the Uf-value tables. Uf-values are calculated under certification of BCCA: certificate BPCB-420-72-10077/2.			
	4.13	Radiation properties	These properties must be evaluated by the CE-label of the glass			
	4.14	Air permeability	<b>4</b>	[0960] - 16.00865 Rev A	FbxFh < 1649x2986	
<b>Non-essential characteristics</b>						
EN 14351-1	4.4.1	Reaction to fire	Anodized: <b>A1</b> Painted: <b>A2</b> Gaskets: <b>E</b>	EC decision 96/603/EC certificate EFR-21-001664A [0432] – 230006500-6		
	4.16	Operating forces	<b>2</b>	[1769] – 363/2513	FbxFh < 1998x2886 219 kg	
	4.17	Mechanical strength	npd			
	4.18	Ventilation	npd			
	4.19	Bullet resistance (BP version)	npd			
	4.20	Explosion resistance	npd			
	4.21	Resistance to repeated opening and closing	<b>4</b> (50 000) <b>3</b> (20 000)	[0960] – 09.1125 <sup>(1)</sup> [0960] – 15.00681	FbxFh < 1428x2219 150 kg FbxFh < 2700x3500 296 kg	
	4.22	Behaviour between different climates	npd			
	4.23	Burglar resistance (AP version)	<b>RC 2</b>	[1309] – 45-2/20.121	See report	

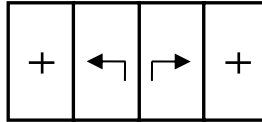
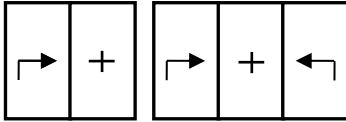
**5.6 2-rail Lift Slide - Corner**


Characteristic		Performance	Notified body - Report	Limits (mm)	
<b>Essential characteristics</b>					
EN 14351-1	4.2	Resistance to wind load	<b>C2</b> (800 Pa)	[0960] - 15.01116	FbxFh < 1728x2886 <sup>(2)</sup>
	4.5	Watertightness	<b>7A</b> (300 Pa)	[0960] - 15.01116	FbxFh < 1728x2886
	4.6	Dangerous substances	In the materials delivered by Reynaers, no dangerous substances as indicated in hEN 14351-1 are used.		
	4.7	Impact resistance	<b>5</b>	[0960] – SKG/HRU/cbo10.0099-5	FbxFh > 821x1729
	4.8	Load-bearing capacity of safety devices	npd		
	4.9	Height & width	See 6		
	4.11	Acoustic performance	npd		
	4.12	Thermal transmittance	Ud to be calculated in function of the project. Pre-calculated U-values for dimensions 2000x2180mm can be found in the Uf-value tables. Uf-values are calculated under certification of BCCA: certificate BPCB-420-72-10077/2.		
	4.13	Radiation properties	These properties must be evaluated by the CE-label of the glass		
	4.14	Air permeability	<b>3</b>	[0960] - 15.01116	FbxFh < 1728x2886
<b>Non-essential characteristics</b>					
EN 14351-1	4.4.1	Reaction to fire	Anodized: <b>A1</b> Painted: <b>A2</b> Gaskets: <b>E</b>	EC decision 96/603/EC certificate EFR-21-001664A [0432] – 230006500-6	
	4.16	Operating forces	<b>2</b>	[1769] – 363/2513	FbxFh < 1998x2886 219 kg
	4.17	Mechanical strength	npd		
	4.18	Ventilation	npd		
	4.19	Bullet resistance (BP version)	npd		
	4.20	Explosion resistance	npd		
	4.21	Resistance to repeated opening and closing	<b>4</b> (50 000) <b>3</b> (20 000)	[0960] – 09.1125 <sup>(1)</sup> [0960] – 15.00681	FbxFh < 1428x2219 150 kg FbxFh < 2700x3500 296 kg
	4.22	Behaviour between different climates	npd		
	4.23	Burglar resistance (AP version)	npd		

# VITRUM

WINDOWS &amp; DOORS

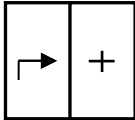
## 5.7 Monorail lift slide



Characteristic		Performance	Notified body - Report		Limits (mm)	
<b>Essential characteristics</b>						
EN 14351-1	4.2	Resistance to wind load	<b>B2</b> (800 Pa)	[0960] – 16.00150 <sup>(1)</sup>	FbxFh < 2498x2896 <sup>(2)</sup>	
	4.5	Watertightness	<b>8A</b> (450 Pa)	[0960] – 16.00150 <sup>(1)</sup>	FbxFh < 2498x2896	
	4.6	Dangerous substances	In the materials delivered by Reynaers, no dangerous substances as indicated in hEN 14351-1 are used.			
	4.7	Impact resistance	<b>5</b>	[0960] – SKG/HRU/cbo10.0099-5	FbxFh > 821x1729	
	4.8	Load-bearing capacity of safety devices	Npd			
	4.9	Height & width	See 6			
	4.11	Acoustic performance	Glass:	Sliding door:	[0757] – 162 34130/4 R1	WxH = 2670x2510
			<b>34 (-1;-4)</b> <b>41 (-2;-4)</b> <b>50 (-2;-8)</b>	<b>35 (-2;-5)</b> <b>38 (-1;-3)</b> <b>42 (-1;-3)</b>		
	4.12	Thermal transmittance	Ud to be calculated in function of the project. Pre-calculated U-values for dimensions 2000x2180mm can be found in the Uf-value tables. Uf-values are calculated under certification of BCCA: certificate BPCB-420-72-10077/2.			
	4.13	Radiation properties	These properties must be evaluated by the CE-label of the glass			
4.14	Air permeability	<b>4</b>	[0960] – 16.00150 <sup>(1)</sup>	FbxFh < 2498x2896		
<b>Non-essential characteristics</b>						
EN 14351-1	4.4.1	Reaction to fire	Anodized: <b>A1</b> Painted: <b>A2</b> Gaskets: <b>E</b>	EC decision 96/603/EC certificate EFR-21-001664A [0432] – 230006500-6		
	4.16	Operating forces	<b>2</b>	[1769] – 363/2513	FbxFh < 1998x2886 219 kg	
	4.17	Mechanical strength	npd			
	4.18	Ventilation	npd			
	4.19	Bullet resistance (BP version)	npd			
	4.20	Explosion resistance	npd			
	4.21	Resistance to repeated opening and closing	<b>4</b> (50 000)	[0960] – 09.1125 <sup>(1)</sup>	FbxFh < 1428x2219 150 kg	
			<b>3</b> (20 000)	[0960] – 15.00681	FbxFh < 2700x3500 296 kg	
	4.22	Behaviour between different climates	npd			
4.23	Burglar resistance (AP version)	<b>RC 2</b>	[1309] – 45-2/20.121	See report		

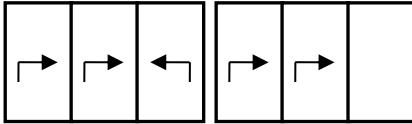
<sup>(1)</sup> outside glazing of fixed vent; sliding vent positioned on the inside

## 5.8 Minergie

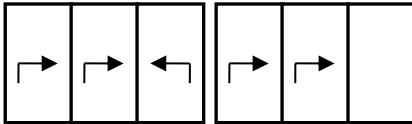


Characteristic		Performance	Notified body - Report	Limits (mm)	
<b>Essential characteristics</b>					
EN 14351-1	4.2	Resistance to wind load	<b>C3</b> (1200 Pa) <b>C2</b> (800 Pa)	[1488] – LZE00-00948/17/R131NZE [1488] – LK02-00948/14/R76NK FbxFh < 1380x2790 <sup>(2)</sup> FbxFh < 2497x3387 <sup>(2)</sup>	
	4.5	Watertightness	<b>9A</b> (600 Pa)	[1488] – LZE00-00948/17/R131NZE [1488] – LK02-00948/14/R76NK FbxFh < 1380x2790 FbxFh < 2497x3387	
	4.6	Dangerous substances	In the materials delivered by Reynaers, no dangerous substances as indicated in hEN 14351-1 are used.		
	4.7	Impact resistance	<b>5</b>	[0960] – SKG/HRU/cbo10.0099-5	FbxFh > 821x1729
	4.8	Load-bearing capacity of safety devices	npd		
	4.9	Height & width	See 6		
	4.11	Acoustic performance	Glass: <b>33 (-1;-4)</b> <b>40 (-1;-3)</b> <b>46 (-2;-5)</b> <b>52 (-1;-5)</b> <b>52 (-1;-5)</b>	Sliding door: <b>32 (-1;-4)</b> <b>37 (-2;-5)</b> <b>39 (-1;-4)</b> <b>42 (-1;-4)</b> <b>43 (-1;-4)</b>	[0960] - 17.00192 [0960] - 17.00255 [0960] - 17.00293 [0960] - 17.00305 [0960] - 17.00325 WxH = 2705x2360
	4.12	Thermal transmittance	Ud to be calculated in function of the project. Pre-calculated U-values for dimensions 2000x2180mm can be found in the Uf-value tables. Uf-values are calculated under certification of BCCA: certificate BPCB-420-72-10077/2.		
	4.13	Radiation properties	These properties must be evaluated by the CE-label of the glass		
	4.14	Air permeability	<b>4</b>	[1488] – LZE00-00948/17/R131NZE [1488] – LK02-00948/14/R76NK	FbxFh < 1380x2790 FbxFh < 2497x3387
	<b>Non-essential characteristics</b>				
	EN 14351-1	4.4.1	Reaction to fire	Anodized: <b>A1</b> Painted: <b>A2</b> Gaskets: <b>E</b>	EC decision 96/603/EC certificate EFR-21-001664A [0432] – 230006500-6
		4.16	Operating forces	<b>2</b>	[1769] – 363/2513 FbxFh < 1998x2886 219 kg
		4.17	Mechanical strength	npd	
4.18		Ventilation	npd		
4.19		Bullet resistance (BP version)	npd		
4.20		Explosion resistance	npd		
4.21		Resistance to repeated opening and closing	<b>4</b> (50 000) <b>3</b> (20 000)	[0960] – 09.1125 <sup>(1)</sup> [0960] – 15.00681	FbxFh < 1428x2219 150 kg FbxFh < 2700x3500 296 kg
4.22		Behaviour between different climates	npd		
4.23		Burglar resistance (AP version)	<b>RC 2</b>	[1309] – 45-2/20.121	See report

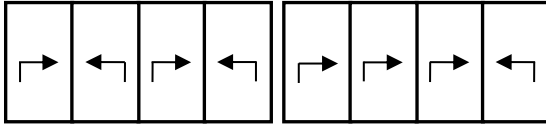
### 5.9 3-rail Lift Slide



Characteristic		Performance	Notified body - Report		Limits (mm)	
<b>Essential characteristics</b>						
EN 14351-1	4.2	Resistance to wind load	<b>C2</b> (800 Pa)		[1488] – LK02-00948/14/R73NK FbxFh < 2497x3386 <sup>(2)</sup>	
	4.5	Watertightness	<b>8A</b> (450 Pa)		[1488] – LK02-00948/14/R73NK FbxFh < 2497x3386	
	4.6	Dangerous substances	In the materials delivered by Reynaers, no dangerous substances as indicated in hEN 14351-1 are used.			
	4.7	Impact resistance	<b>5</b>	[0960] – SKG/HRU/cbo10.0099-5	FbxFh > 821x1729	
	4.8	Load-bearing capacity of safety devices	npd			
	4.9	Height & width	See 6			
	4.11	Acoustic performance	Glass:	Sliding door:		
			<b>34 (-1;-4)</b> <b>41 (-2;-4)</b> <b>50 (-2;-8)</b>	<b>35 (-2;-5)</b> <b>38 (-1;-3)</b> <b>42 (-1;-3)</b>	[0757] – 162 34130/4 R1	WxH = 2670x2510
	4.12	Thermal transmittance	Ud to be calculated in function of the project. Pre-calculated U-values for dimensions 2000x2180mm can be found in the Uf-value tables. Uf-values are calculated under certification of BCCA: certificate BPCB-420-72-10077/2.			
	4.13	Radiation properties	These properties must be evaluated by the CE-label of the glass			
4.14	Air permeability	<b>4</b>	[1488] – LK02-00948/14/R73NK	FbxFh < 2497x3386		
<b>Non-essential characteristics</b>						
EN 14351-1	4.4.1	Reaction to fire	Anodized: <b>A1</b> Painted: <b>A2</b> Gaskets: <b>E</b>	EC decision 96/603/EC certificate EFR-21-001664A [0432] – 230006500-6		
	4.16	Operating forces	<b>2</b>	[1769] – 363/2513	FbxFh < 1998x2886 219 kg	
	4.17	Mechanical strength	npd			
	4.18	Ventilation	npd			
	4.19	Bullet resistance (BP version)	npd			
	4.20	Explosion resistance	npd			
	4.21	Resistance to repeated opening and closing	<b>4</b> (50 000)	[0960] – 09.1125 <sup>(1)</sup>	FbxFh < 1428x2219 150 kg	
			<b>3</b> (20 000)	[0960] – 15.00681	FbxFh < 2700x3500 296 kg	
	4.22	Behaviour between different climates	npd			
4.23	Burglar resistance (AP version)	<b>RC 2</b>	[1309] – 45-2/20.121	See report		

**5.10 3-rail Lift Slide - Zero Threshold**


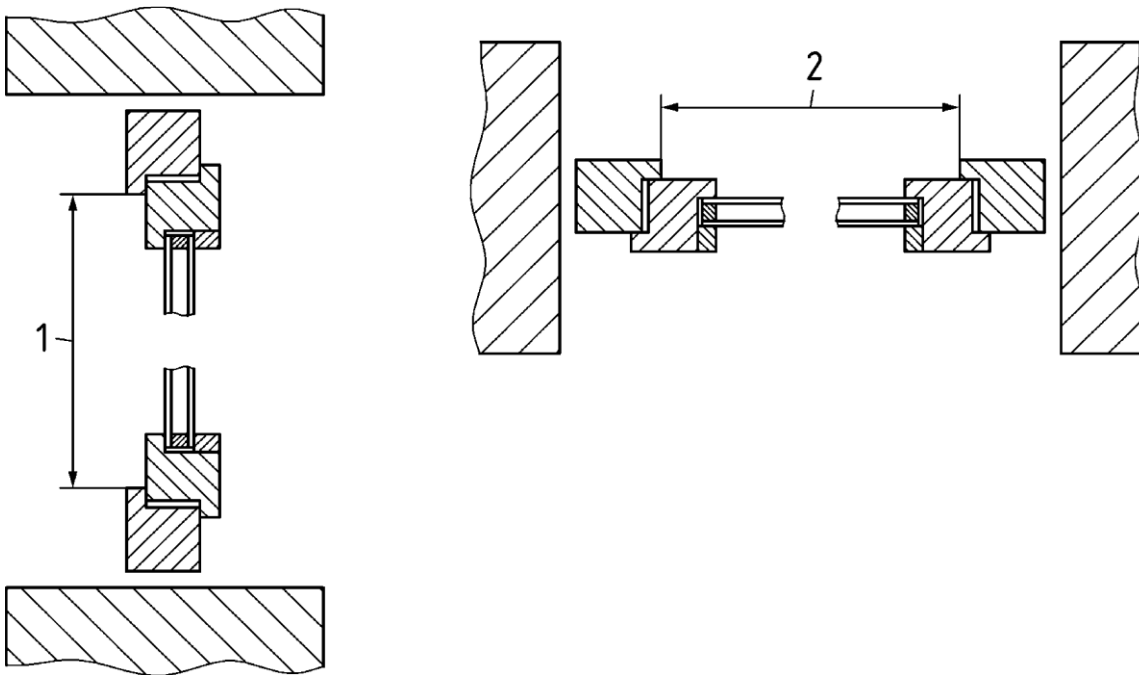
Characteristic		Performance	Notified body - Report	Limits (mm)	
<b>Essential characteristics</b>					
EN 14351-1	4.2	Resistance to wind load	<b>C2</b> (800 Pa)	[0960] – 14.01031-Rev A	FbxFh < 1302x2867 <sup>(2)</sup>
	4.5	Watertightness	<b>8A</b> (450 Pa)	[0960] – 14.01031-Rev A	FbxFh < 1302x2867
	4.6	Dangerous substances	In the materials delivered by Reynaers, no dangerous substances as indicated in hEN 14351-1 are used.		
	4.7	Impact resistance	<b>5</b>	[0960] – SKG/HRU/cbo10.0099-5	FbxFh > 821x1729
	4.8	Load-bearing capacity of safety devices	npd		
	4.9	Height & width	See 6		
	4.11	Acoustic performance	npd		
	4.12	Thermal transmittance	Ud to be calculated in function of the project. Pre-calculated U-values for dimensions 2000x2180mm can be found in the Uf-value tables. Uf-values are calculated under certification of BCCA: certificate BPCB-420-72-10077/2.		
	4.13	Radiation properties	These properties must be evaluated by the CE-label of the glass		
4.14	Air permeability	<b>3</b>	[0960] – 14.01031-Rev A	FbxFh < 1302x2867	
<b>Non-essential characteristics</b>					
EN 14351-1	4.4.1	Reaction to fire	Anodized: <b>A1</b> Painted: <b>A2</b> Gaskets: <b>E</b>	EC decision 96/603/EC certificate EFR-21-001664A [0432] – 230006500-6	
	4.16	Operating forces	<b>2</b>	[1769] – 363/2513	FbxFh < 1998x2886 219 kg
	4.17	Mechanical strength	npd		
	4.18	Ventilation	npd		
	4.19	Bullet resistance (BP version)	npd		
	4.20	Explosion resistance	npd		
	4.21	Resistance to repeated opening and closing	<b>4</b> (50 000) <b>3</b> (20 000)	[0960] – 09.1125 <sup>(1)</sup> [0960] – 15.00681	FbxFh < 1428x2219 150 kg FbxFh < 2700x3500 296 kg
	4.22	Behaviour between different climates	npd		
	4.23	Burglar resistance (AP version)	npd		

**5.11 4-rail Lift Slide**


Characteristic		Performance	Notified body - Report	Limits (mm)	
<b>Essential characteristics</b>					
<b>EN 14351-1</b>	4.2	Resistance to wind load	<b>A3</b> (1200 Pa)	[0960] – 14.01030-Rev A	FbxFh < 1302x2886 <sup>(2)</sup>
	4.5	Watertightness	<b>7A</b> (300 Pa)	[0960] – 14.01030-Rev A	FbxFh < 1302x2886
	4.6	Dangerous substances	In the materials delivered by Reynaers, no dangerous substances as indicated in hEN 14351-1 are used.		
	4.7	Impact resistance	<b>5</b>	[0960] – SKG/HRU/cbo10.0099-5	FbxFh > 821x1729
	4.8	Load-bearing capacity of safety devices	npd		
	4.9	Height & width	See 6		
	4.11	Acoustic performance	npd		
	4.12	Thermal transmittance	Ud to be calculated in function of the project. Pre-calculated U-values for dimensions 2000x2180mm can be found in the Uf-value tables. Uf-values are calculated under certification of BCCA: certificate BPCB-420-72-10077/2.		
	4.13	Radiation properties	These properties must be evaluated by the CE-label of the glass		
	4.14	Air permeability	<b>3</b>	[0960] – 14.01030-Rev A	FbxFh < 1302x2886
<b>Non-essential characteristics</b>					
<b>EN 14351-1</b>	4.4.1	Reaction to fire	Anodized: <b>A1</b> Painted: <b>A2</b> Gaskets: <b>E</b>	EC decision 96/603/EC certificate EFR-21-001664A [0432] – 230006500-6	
	4.16	Operating forces	<b>2</b>	[1769] – 363/2513	FbxFh < 1998x2886 219 kg
	4.17	Mechanical strength	npd		
	4.18	Ventilation	npd		
	4.19	Bullet resistance (BP version)	npd		
	4.20	Explosion resistance	npd		
	4.21	Resistance to repeated opening and closing	<b>4</b> (50 000) <b>3</b> (20 000)	[0960] – 09.1125 <sup>(1)</sup> [0960] – 15.00681	FbxFh < 1428x2219 150 kg FbxFh < 2700x3500 296 kg
	4.22	Behaviour between different climates	npd		
	4.23	Burglar resistance (AP version)	npd		

## 6 RULE FOR DEFINITION OF CLEAR OPENING HEIGHT AND WIDTH

The clear opening height 1 and clear opening width 2 are defined as indicated in following sketches of EN 12519:2018.





**UPDATES**

---

**30/6/2022**

	VARIANTS	Characteristic
EFR-21-001664A	5.1 ~ 5.11	4.4.1
230006500-6	5.1 ~ 5.11	4.4.1
20.00188	5.1 ~ 5.3	4.23
20.00349	5.1 ~ 5.3	4.16, 4.21
20.00713	5.4	4.2, 4.5, 4.14

**08/06/2023**

	VARIANTS	Characteristic
45-2/20.121	5.1 ~ 5.5, 5.7 ~ 5.9	4.23